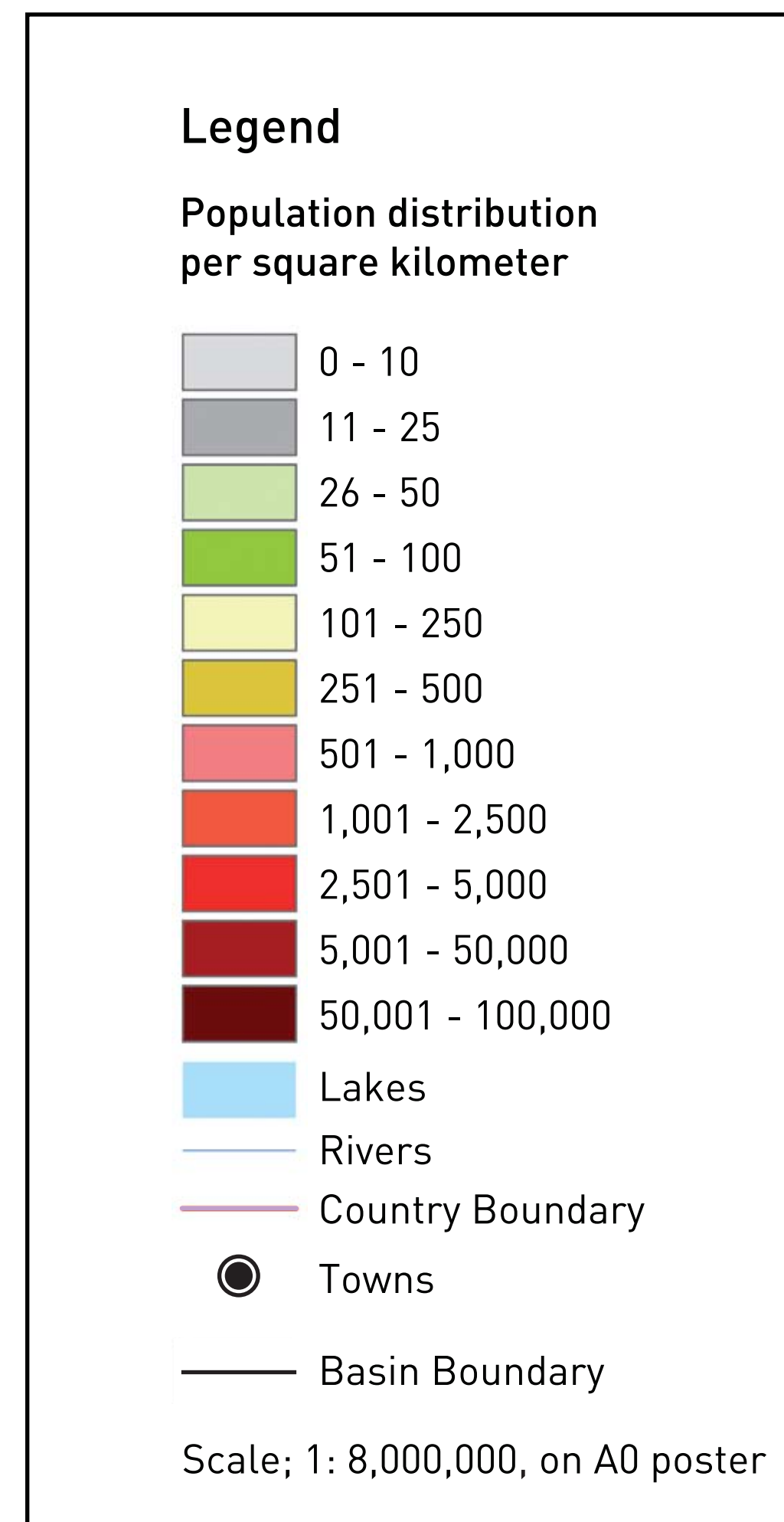
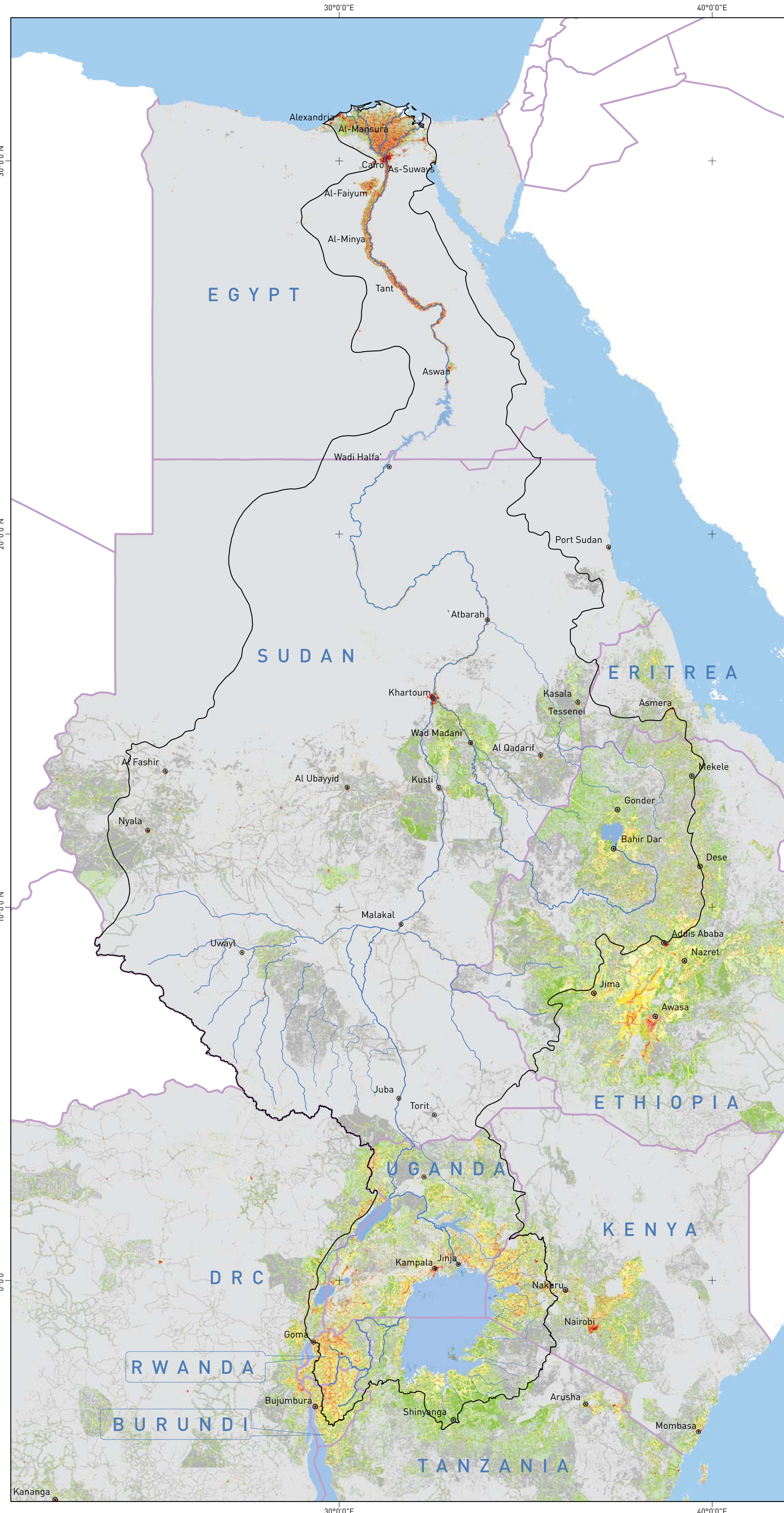


POPULATION PROSPECTS IN THE NILE BASIN

2005 Estimates

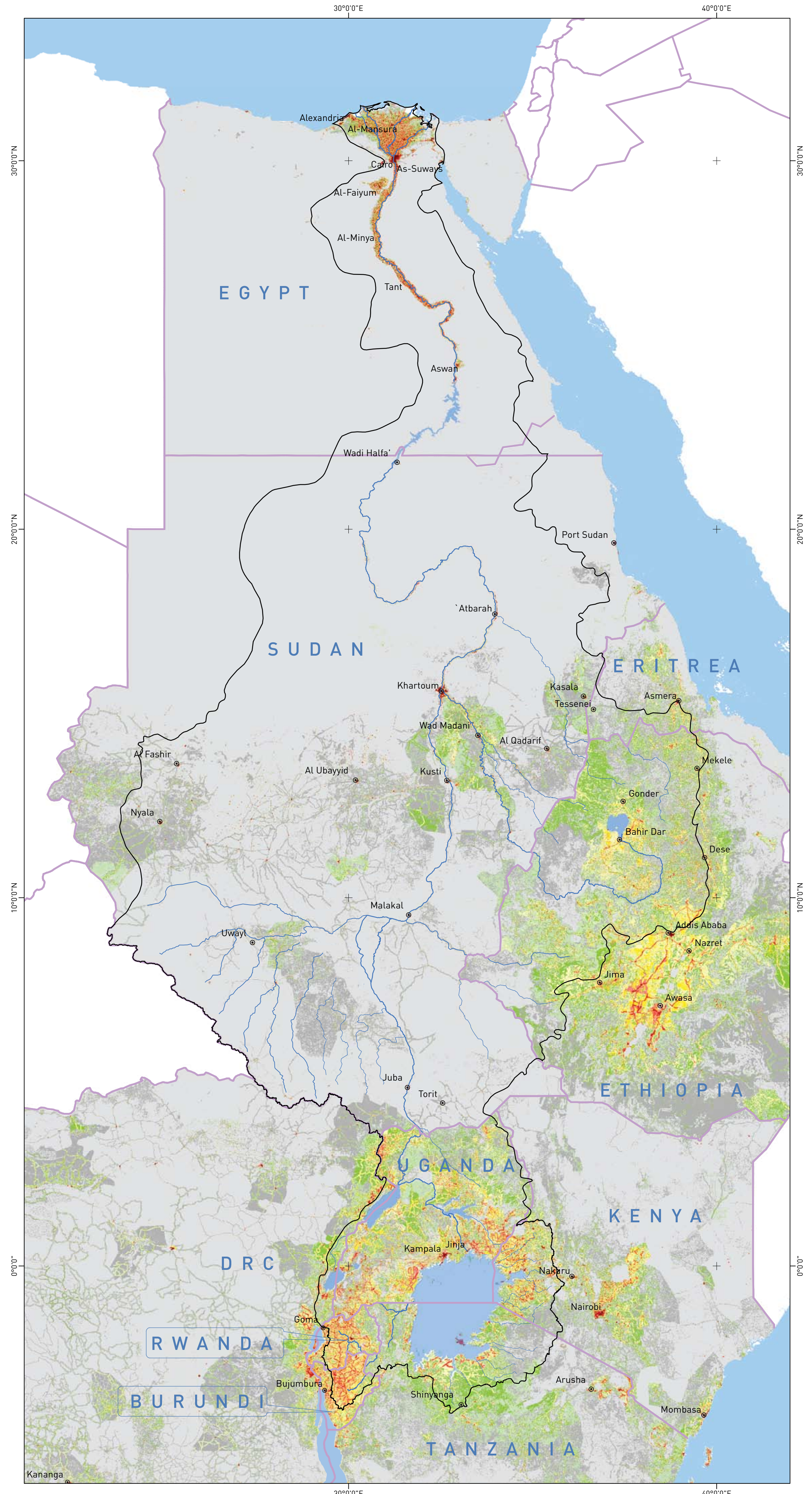


Data Sources

- United Nations Population Division, 2030 medium variant
- US Bureau of Census, 2005
- LandScan 2004 Distributed Population layer
- AFRICOVER urban areas
- ESRI Gazetteer
- Urban polygons digitized by the project for DR Congo, Egypt and Ethiopia

These maps are not an authority on international boundaries

2030 Projections



About this poster

This poster presents population densities in the Nile countries in 2005 and projections for 2030.

According to the United Nations Population Division (UNPD), the countries will hit a medium estimate of 654 million in 2030 from 372 million in 2005. Currently 54% of the total population lives within the Nile basin.

Population is highest in the East African Plateau, the Nile valley, the Nile delta, the Ethiopian highlands, and in Khartoum. High densities in the Lake Victoria region are in Uganda's capital Kampala, in Kenya's Nakuru town, and in Rwanda and Burundi.

Vast areas of Sudan are unoccupied. After Khartoum, density is high at Atbarah and fairly high in the irrigated areas south of Khartoum. In Egypt population density is high along the Nile, stretching from Aswan to the Mediterranean Sea. Virtually every Egyptian -- 99.7% -- lives in the Nile basin.

Ethiopia has high concentrations around Lake Tana and the city of Bahir Dar. The country's highest population density is however outside the Nile basin, especially in Addis Ababa and the areas around Awasa.

Large areas of the DR Congo, Eritrea, Kenya and Tanzania are sparsely populated. But population density is substantial in their Nile basin areas.

Population explosion -- as we move towards 2030 -- is observed mainly around Lake Victoria, in the Ethiopian Highlands, and in several parts of the Nile valley and the Nile delta.

While the settlement pattern in the lower riparians follows the river, in the upper riparians it tends to follow rainfall distribution.

Assumptions

1. Country totals are derived from the UNPD 2005 and 2030 medium variant;
2. Relative population distribution is from Landscan 2004;
3. Differences between US Bureau of Census and UNPD 2005 adjusted proportionally per grid cell;
4. Urban growth spread proportionally over urban areas;
5. Rural growth spread proportionally over rural areas;
6. Areas classified as urban in 2005 remain urban in 2030;
7. Areas classified as rural remain rural in 2030, with the exception of rural areas in close proximity of existing urban areas.

2005 - 2030 Nile Basin Population Prospects: Medium UNPD Variant

Country	2005 ('000)	Nile Basin 2005 ('000)	Nile Basin 2030 ('000)
Burundi	7,859	4,615	9,911
DRC	58,741	1,851	4,117
Egypt	72,850	72,617	101,465
Eritrea	4,527	1,721	3,489
Ethiopia	78,986	31,044	50,345
Kenya	35,599	13,359	25,411
Rwanda	9,234	7,685	14,066
Sudan	36,900	32,406	53,664
Tanzania	38,478	7,933	13,194
Uganda	28,947	28,477	60,418
Sum	372,121	201,708	336,080

2030 Prospects: Low - Medium - High UNPD Variants

Country	2030 Low Variant ('000)	2030 Medium Variant ('000)	2030 High Variant ('000)
Burundi	16,367	17,232	18,103
DRC	116,119	122,734	128,220
Egypt	96,189	104,070	112,045
Eritrea	7,895	8,433	8,975
Ethiopia	128,639	137,052	145,530
Kenya	58,563	62,762	67,015
Rwanda	15,683	16,646	17,614
Sudan	54,460	58,446	62,464
Tanzania	61,096	65,516	69,991
Uganda	57,968	61,548	65,163
Sum	612,979	654,439	695,120
	+65	+76	+87

2005 - 2030 Rural - Urban Prospects: Medium UNPD Variant

Country	2005 Urban ('000)	2030 Urban ('000)	2030 Rural %
Burundi	801	3,604	80
DRC	18,845	59,891	51
Egypt	31,291	57,875	44
Eritrea	916	3,040	64
Ethiopia	12,511	36,971	73
Kenya	14,263	38,017	39
Rwanda	1,968	8,401	49
Sudan	14,775	32,806	44
Tanzania	14,373	32,722	50
Uganda	3,580	14,691	74

Information Products for Nile Basin Water Resources Management

c/o FAO Representative Office in Uganda

P. O. Box 521, Kampala, UGANDA

Phone: (256) 414 321391

GCP/INT/945/ITA

info@faonile.org

burundi d.r.congo egypt eritrea ethiopia kenya rwanda sudan tanzania uganda

The project is intended to strengthen the ability of the governments of the Nile Riparian States to take informed decisions on water resources policy and management matters regarding the common Nile resource. It includes a major capacity building component. The project is implemented under the umbrella of the Nile Basin Initiative.



www.fanonile.org

A project sponsored by the Government of Italy