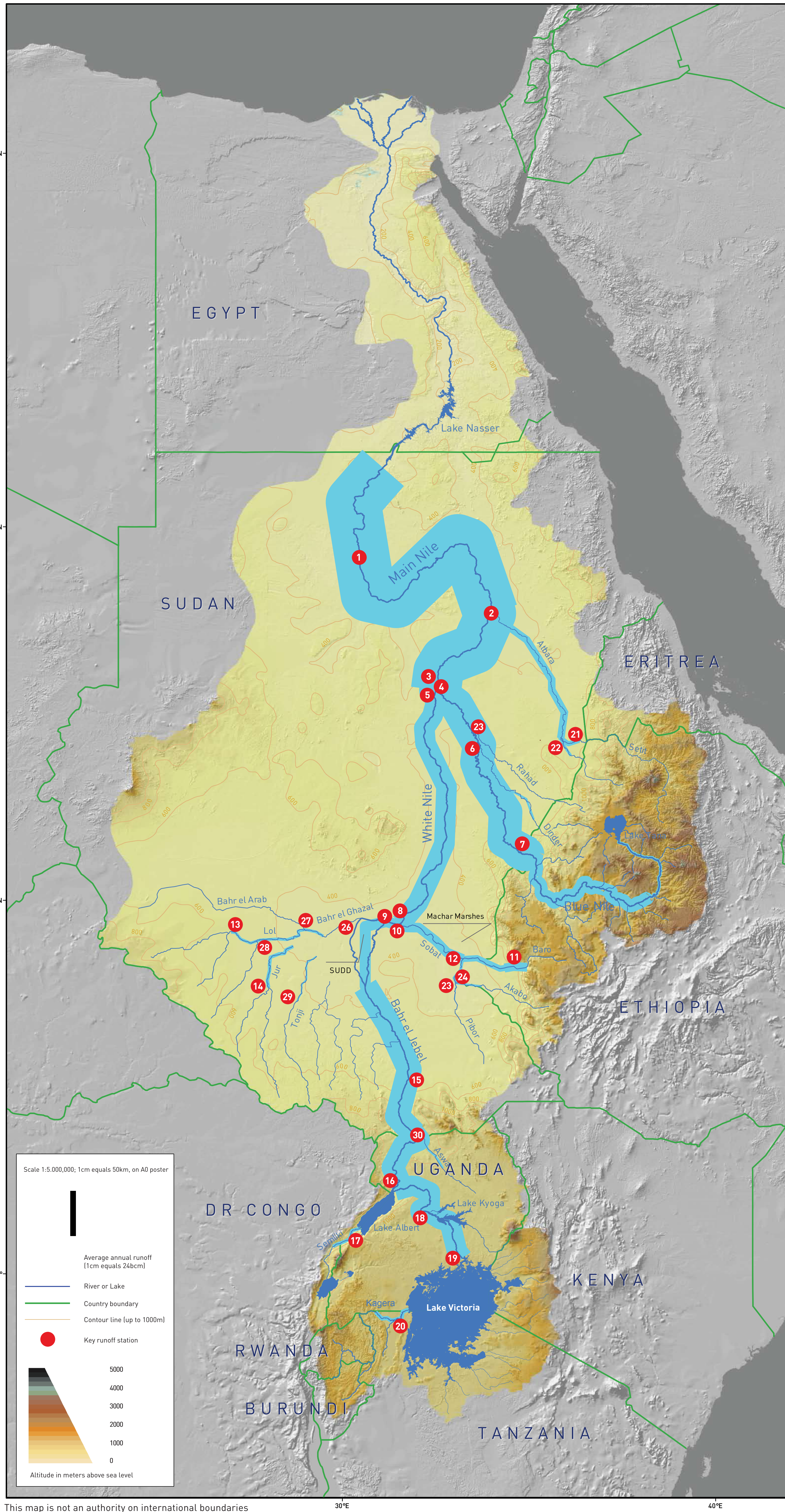


HYDROLOGIC REGIME IN THE NILE BASIN

Average annual flow of the Nile and main tributaries upstream of Lake Nasser



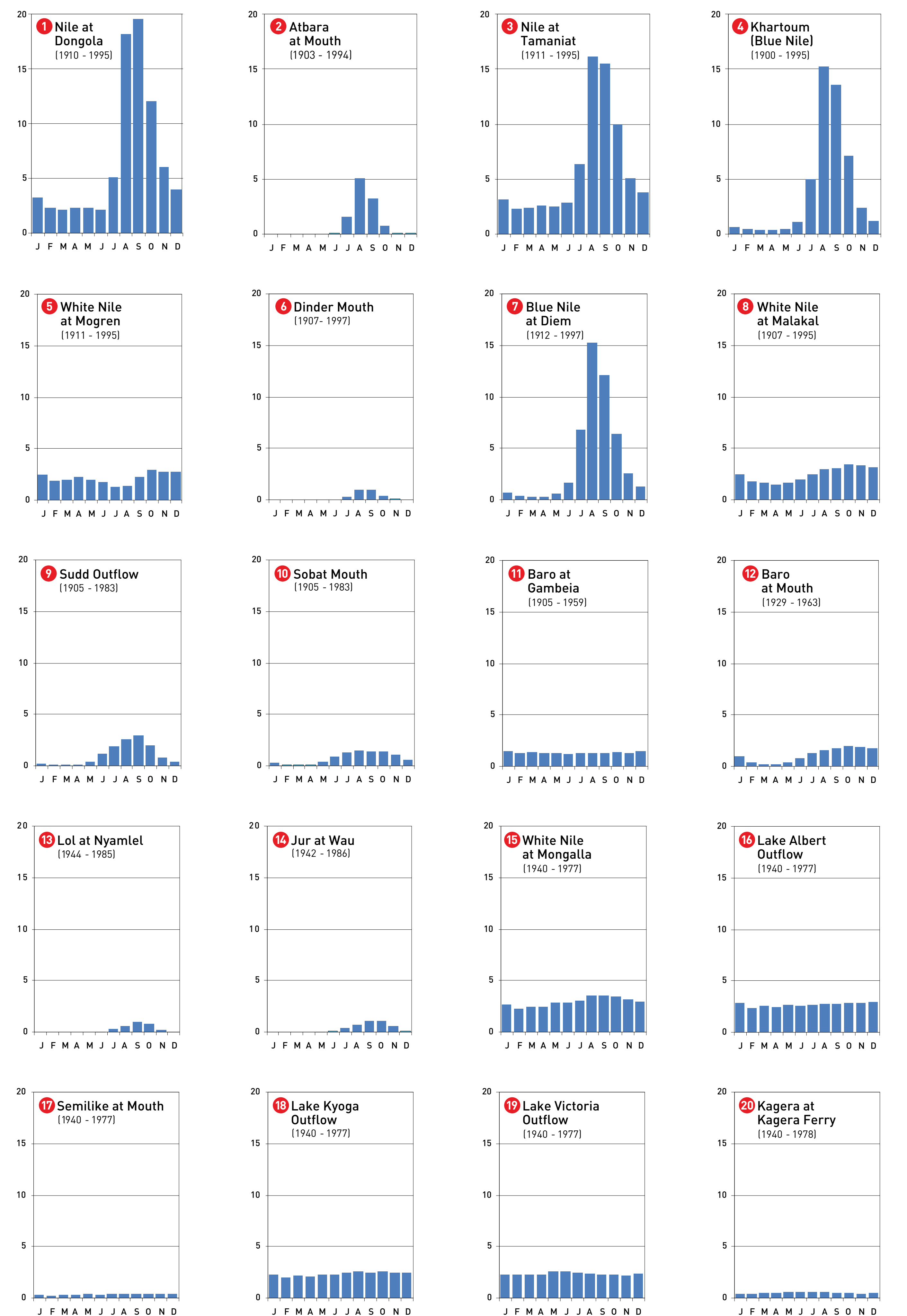
About this poster

This poster presents the average annual flow of the Nile and its main tributaries upstream of Lake Nasser. It was not considered meaningful to present information downstream of this point, as no new tributaries join the Nile system after Aswan, and Lake Nasser outflow is fully regulated.

All data presented on this poster has been obtained from "The Hydrology of the Nile" by J. Sutcliffe and Y Parks.

When comparing the relative contributions of the various Nile components, the reader is cautioned that average annual discharge at Key sections was calculated from flow records of different length.

Mean monthly flow in billion cubic meters [bcm] at key stations (numbers indicated on map)



Average annual flow in billion cubic meters [bcm] at key stations (numbers indicated on map)

Nr	River and Station Name	Data Period	Avg Ann Flow [bcm]	Nr	River and Station Name	Data Period	Avg Ann Flow [bcm]	Nr	River and Station Name	Data Period	Avg Ann Flow [bcm]
1	Main Nile at Dongola	1910 - 1995	80.0	11	Baro at Gambeia	1905 - 1959	13.2	21	Setit at Kurbur	-	7.0
2	Atbara at mouth	1903 - 1994	11.1	12	Baro at mouth	1929 - 1963	9.5	22	Atbara at Wad el Hiliew	-	4.0
3	Main Nile at Tamaniat	1911 - 1995	72.7	13	Lol at Nyamlet	1944 - 1985	3.2	23	Rahad at mouth	1908 - 1997	1.1
4	Blue Nile at Khartoum	1900 - 1995	48.3	14	Jur at Wau	1942 - 1986	4.5	24	Akabo (incl. Gilla & Mokwa)	-	2.8
5	White Nile at Mogren	1911 - 1995	26.0	15	Bahr el Jebel at Mongalla	1940 - 1977	36.0	25	Pibor	-	1.0
6	Dinder at mouth	1907 - 1997	2.8	16	Lake Albert outflow	1940 - 1977	32.8	26	Bahr el Ghazal (K. Dolieb)	1937 - 1964	0.3
7	Blue Nile at Diem	1912 - 1997	48.7	17	Semliki at mouth	1940 - 1977	4.6	27	Bahr el Arab	-	0.3
8	White Nile at Malakal	1905 - 1995	29.6	18	Lake Kyoga outflow	1940 - 1977	28.6	28	Pongo	-	0.6
9	Sudd Outflow	1905 - 1983	16.1	19	Lake Victoria outflow	1940 - 1977	28.6	29	Tonj	1944 - 1985	1.4
10	Sobat at Hillet Dolieb	1905 - 1983	13.5	20	Kagera at Kyaka Ferry	1940 - 1978	6.3	30	Aswa	1940 - 1977	3.0

Information Products for Nile Basin Water Resources Management

GCP/INT/945/ITA

c/o FAO Representative Office in Uganda

P. O. Box 521, Kampala, UGANDA

Phone: (256) 414 321391

info@faonile.org

burundi dr.congo egypt eritrea ethiopia kenya rwanda sudan tanzania uganda

The project is intended to strengthen the ability of the governments of the Nile Riparian States to take informed decisions on water resources policy and management matters regarding the common Nile resource. It includes a major capacity building component. The project is implemented under the umbrella of the Nile Basin Initiative.



www.faonile.org

A project sponsored by the Government of Italy