



NILE BASIN

The **Nile Basin Initiative (NBI)** is a partnership initiated and led by the riparian states of the Nile River through the Council of Ministers of Water Affairs of the Nile Basin states (Nile Council of Ministers, or Nile- COM).

The NBI seeks to develop the river in a cooperative manner, share substantial socioeconomic benefits, and promote regional peace and security.

The NBI started with a participatory process of dialogue among the riparians that resulted in their agreement on a shared vision:

“to achieve sustainable socioeconomic development through the equitable utilization of, and benefit from, the common Nile Basin water resources”



NBDSS Technical Support
helpdesk@nilebasin.org
<http://nbdss.nilebasin.org>

Nile Basin Initiative Secretariat
Water Resource Management Department
 Plot 12 Mpigi Road
 P. O. Box 192, Entebbe, Uganda
 Tel: + 256 414 321424/1329
 Fax: + 256 414 320971
 Email: wrm@nilebasin.org
 Website: <http://www.nilebasin.org>

NBDSS

**NILE BASIN
 DECISION SUPPORT
 SYSTEM**

SCENARIO ANALYSIS
 OPTIMIZATION



DATA GAP FILLING
 MULTI-CRITERIA ANALYSIS
 WATER BALANCE MODELING

BENEFIT - COST ANALYSIS
 INDICATORS
 TRADEOFF ANALYSIS



NILE BASIN INITIATIVE
 Initiative du Bassin du Nil



OPPORTUNITIES



CHALLENGES



COOPERATION

The Nile Basin Decision Support System

The Nile Basin Decision Support System (NB DSS) is software framework jointly developed by the Nile Riparian states for communication, information management and analysis of water resources. It provides a platform for sharing knowledge, understanding river system behaviour, evaluating alternative development and management strategies, and supporting informed and knowledge-based, scientific decision making

The Nile - a Shared Resource

The Nile River is shared by eleven countries with rapidly growing population. It is the lifeline for over 350 million people. With drainage area of over 3 million sq km, it connects regions with climatic and ecological extremes.

Opportunities

- The Nile offers huge potential for energy and food production;
- The Nile Basin is home to world heritage key environmental assets;
- The Nile offers huge potential for energy and food production;
- The ongoing cooperation among Nile Basin countries offers excellent vehicle for a sustainable development and management of the Nile.

Challenges

- Nile Basin countries are facing rapidly growing water demand of multiple sectors
- Compared to many big rivers, the Nile has small flow volume; thus the Nile Basin is a water scarce region
- Climate Change is expected to potentially aggravate the water shortage

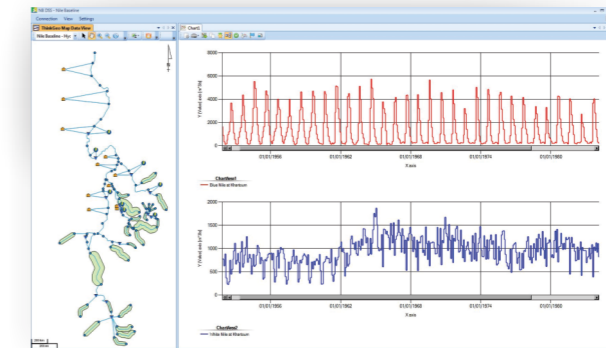
Are we prepared?

- How do we ensure current and future demands for water, food and energy are met for all the people of the Nile Basin countries?
- How do we know that our water resources management plans are sound to minimize vulnerability to current and anticipated climate change?
- How best can the riparians of the Nile develop the common Nile water resources in a mutually beneficial manner?
- Under such complex situations, how do we make our water resources decisions would not lead to regrettable outcomes?

NILE BASIN DSS OFFERS

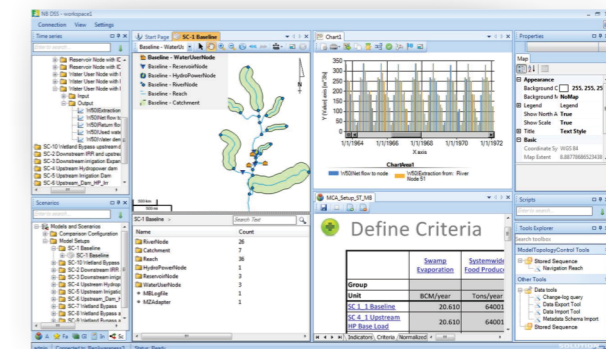
NB DSS for addressing water resources management challenges

The Nile Basin DSS provides a **suite of powerful modeling and information management tools**. This suite can be used to understand the river system better, detect development of extreme events (droughts, floods) and enable Nile Basin countries address the challenges they face more effectively.



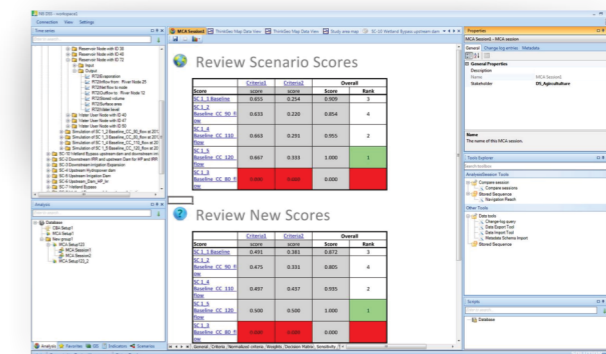
NB DSS for tapping opportunities

The NB DSS offers **comprehensive scenario analysis and optimization tools** for preparing sound water resources management plans. It provides a versatile tool for evaluating environmental, social and economic indicators. This is very critical for identifying opportunities that meet societal needs as well as environmental sustainability requirements.



NB DSS – for supporting Nile cooperation

The NB DSS provides specialized **Multi-Criteria Decision Making tool** to support transparent decision making under multi-stakeholder, multi-country context. The tool helps in addressing concerns of multiple stakeholders and leads to sound/rational informed decisions. This also facilitates confidence and trust building among concerned stakeholders and countries – a key dimension of Nile cooperation.



NB DSS – a riparian owned tool

Right from its inception to development, the NB DSS has the finger print of the Nile riparians. Its development has been led and managed by a team of professional from all Nile riparian countries with world renowned international experts providing technical advice.